



# Low Carbon Investment Registry



Investor Network on  
**CLIMATE RISK**

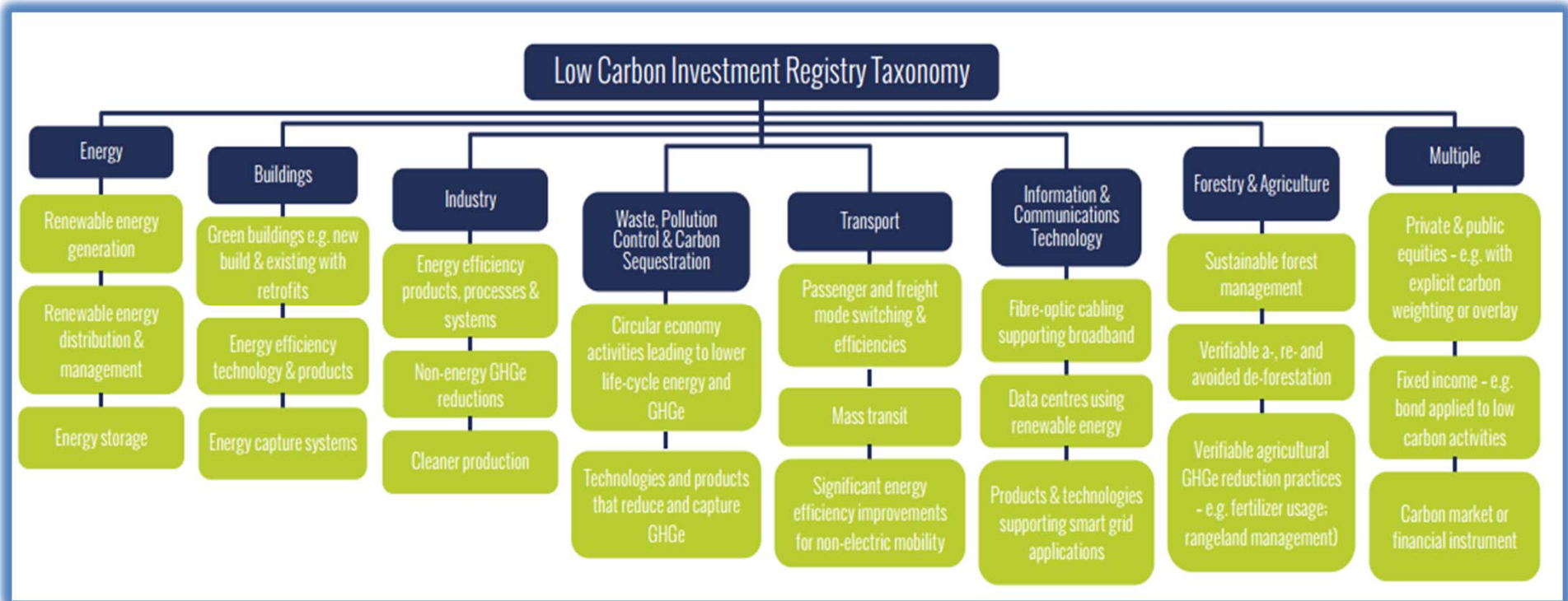


Investor Group on  
**Climate Change**



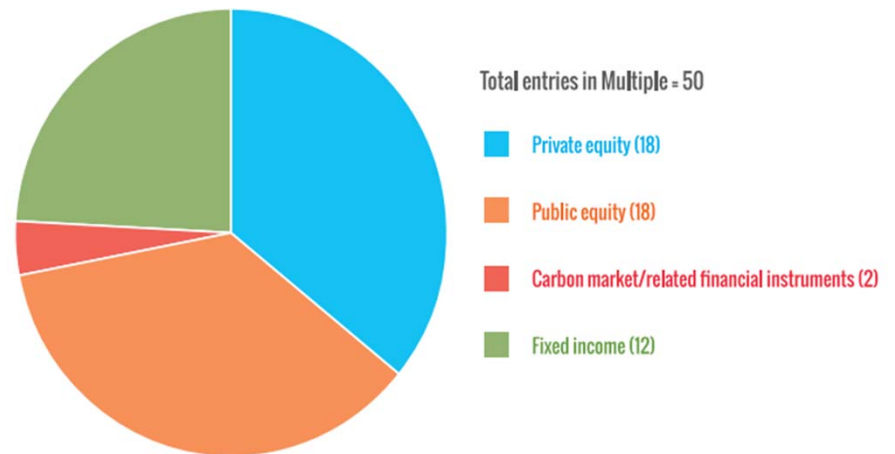
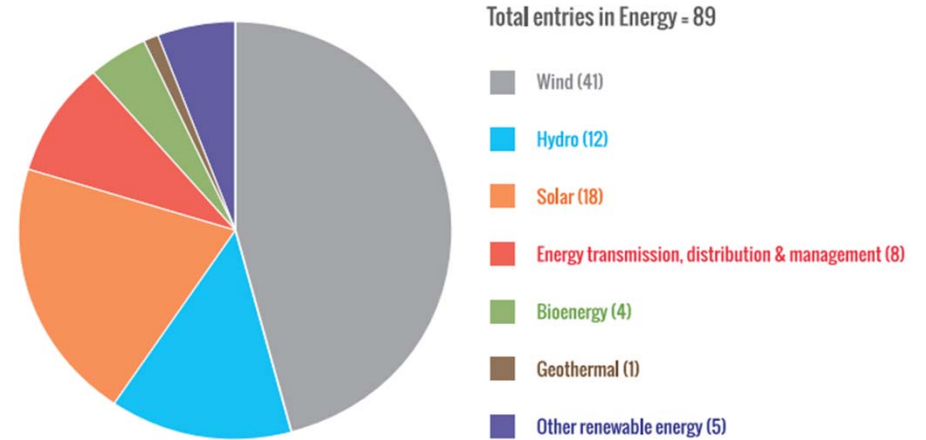
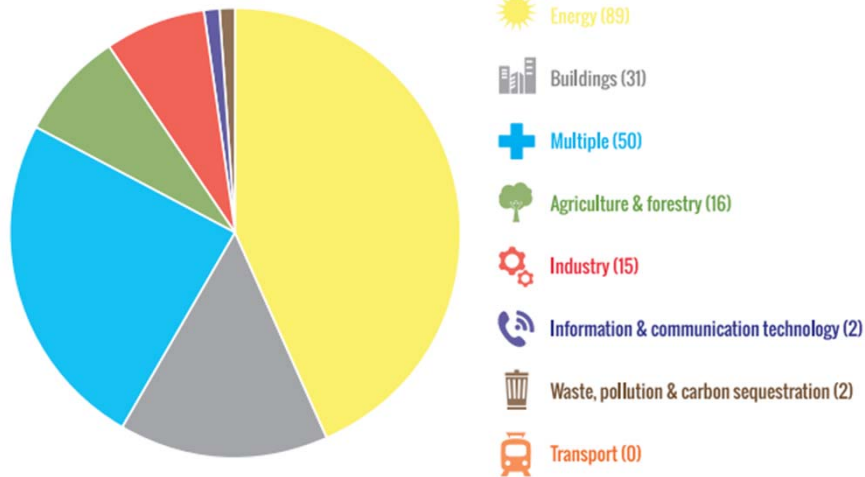
**GLOBAL INVESTOR COALITION ON CLIMATE CHANGE**

# LCI Registry Taxonomy



# Key results

- 205 entries
- 45 asset owners
- \$24bn



## Lessons

- On defining/classifying low carbon
- Majority of investors identified only easily identifiable low carbon assets
- Methodologies inconsistent with taxonomy e.g. least emissions intensive FF companies
- No tools/data to assess low carbon exposure in passive listed equities
- Challenging to assess large diversified companies
- Several investors found low carbon exposure at 10% or more of portfolio
- Transparency doesn't have to be scary