



PILAR

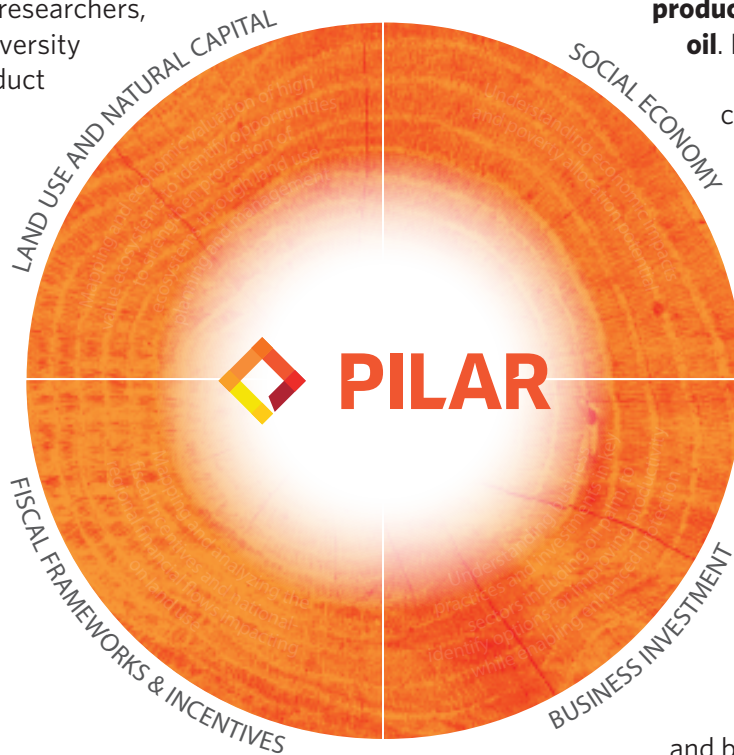
PALANGKARAYA INSTITUTE FOR
LAND USE + AGRICULTURAL RESEARCH

Supporting Sustainable Development

Palangkaraya Institute for Land and Agricultural

Research (PILAR) is a research foundation that supports local experts, researchers, and students at the University of Palangkaraya to conduct analysis on land use optimization in Central Kalimantan. **PILAR has a particular focus on supporting the development of high-productivity, sustainable oil palm, while conserving valuable ecosystems in Central Kalimantan.**

The results of PILAR analyses are used to develop recommendations for local policymakers and business investors.



In 2015, our analysis will be used to develop a **comprehensive jurisdictional model for high-productivity, sustainable palm**

oil. Implementing this model at a district level enables conversion of land to high value uses, including production and protection of natural capital at scale. The model will identify opportunities for business and smallholders to grow by implementing best practices and increasing productivity, and for government to implement policies and regulatory frameworks that promote efficiency and business competitiveness across a jurisdiction, all while fostering local development and improved management of valuable natural resources.

Quick Facts on Central Kalimantan

- Central Kalimantan is the third largest province in Indonesia
- Target to more than triple oil palm planted area to 3.5 million hectares by 2020
- Oil palm currently contributes approximately 25% of GDP in Central Kalimantan and is the province's fastest growing sector
- Dayak peoples are the largest ethnic group in the province
- Central Kalimantan contains 8% of the world's tropical peatlands and a rich array of biodiversity
- There are more than 3 million hectares of degraded lands that could be suitable for conversion to high productivity agriculture.